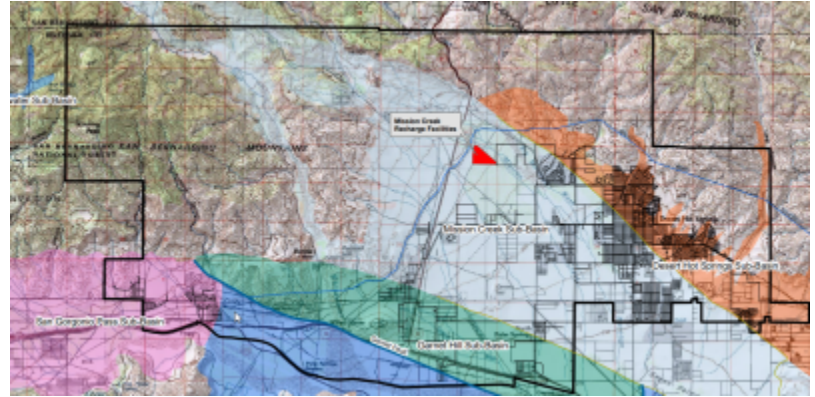


MSWD Water and Sewer System Maps

Property owners, homeowners, and developers can research MSWD's existing water and sewer infrastructure using our [PUBLIC VIEWER](#).

Use the map to research:

- Water services
- Sewer services
- Assessment Districts
- Subbasins



Information provided on this map is for preliminary planning only and does not replace any application approval or permitting processes by MSWD. For more detailed information, please contact the Mission Springs Water District Engineering Department at [engineering \[at\] mswd.org](mailto:engineering@mswd.org).

Supporting Documents

Hot Water and Fault Zone Maps 105.02 KB

MSWD Boundary Map 1.62 MB

Request For Information 686.86 KB