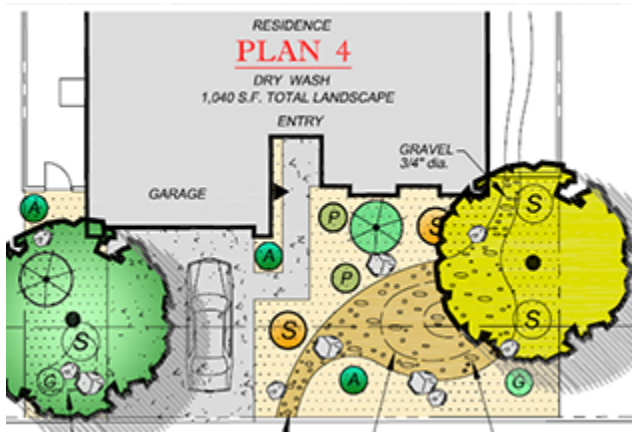


MSWD Water Efficient Landscape Guidelines

As demand on our region's limited water resources increases, it has become more important that we make conservation our mission. Because up to 75 percent of our residential water is used outdoors, choosing water-efficient plants for landscaping can make a big impact in reducing the consumption of this valuable, irreplaceable resource.



For more information, please download a copy of [MSWD's landscaping guidelines/requirements](#) below. For helpful plant species information and planting tips, visit the [MSWD Conservation - Plant Guide website](#) or download our [landscape installation tips](#).



Pre-Approved Landscape Plans

.pdf

. 1 .pdf

.pdf

. 2 .pdf

.pdf

3a. DHS Type Color Land Front Plan No. 3 .pdf

4. DHS Type Land Front Plan No. 4 .pdf

4a. DHS Type Color Land Front Plan No. 4 .pdf

DHS Type Color Land Front - ALL [.pdf](#) [.zip](#)



Water Calculations

.pdf

.pdf

ient .pdf

[.pdf](#) [.zip](#)



Plant Palettes

[pdf](#)

[pdf](#)

[pdf](#)

[pdf](#) [.zip](#)

Supporting Documents

MSWD's Water Efficient Landscaping Guidelines 84.23 KB

2010 Updates and Changes 30.63 KB

Landscape Plans Title Block 58.85 KB

Landscape Installation Tips 168.25 KB